

PMC YouScan PROGRAM

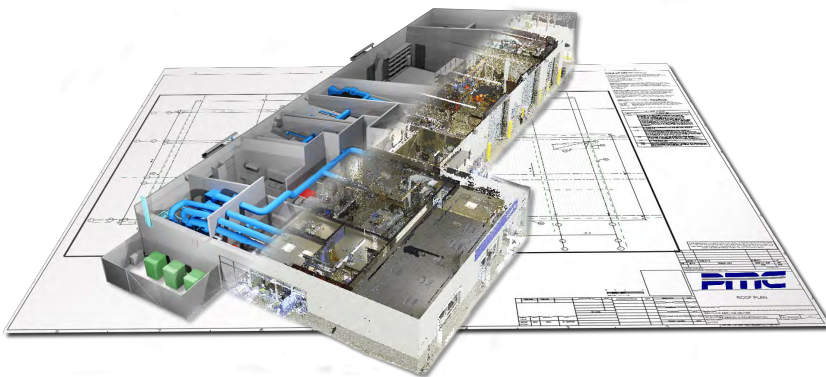
Summary of Services—YouScan

Introduction

While laser scanning has become standard on many projects some are left out because mobilization costs can be prohibitive on smaller projects. At PMC we want to ensure that all projects have access to the transformative power of truly accurate data. To that end we developed the PMC YouScan program. YouScan replaces the traditional cost of a skilled on site scan technician with your in house talent using PMC's hardware. With simple to follow instructions and a scan plan created by one of our experts, you will soon have your true as-built data for use on your project. Gone are the days of slow and inaccurate manual measurements.

Core Deliverables

- Point Cloud Data
- 2D CAD Drawings
- 3D CAD Models
- Smart BIM Data
- Web Access for Point Clouds
- Aerial Photogrammetry
- Extended Data Collection



True As-built data



How it works

PMC will handle all parts of the reality capture project except the field work of running the scanner. We will plan the project, load everything you need into a box including the scanner and an iPad. You will open the box on-site, follow the quick start video on the iPad, complete the scanning, and send the scanner back to PMC. We will take it from there and in a few days your data will be ready.

THE YOUSCAN PROCESS



The Timeline

Your Tasks

PMC's Tasks

72
Hours+

- Supply a PDF or DWG file of the scope area to PMC.
 - Participate in a kick-off meeting to establish project goals.
- Participate in a kick-off meeting to record project goals.
 - Develop scan plan for you.

24
Hours

- Sign off on the scan plan.
 - New customers participate in a 1-hour online training session.
- Review scanning plan with you and gets sign off
 - Uploads plan to iPad app
 - Sets up the scanner
 - Ships scanner overnight
 - Local option for curbside

Day of
Scan

- Receive the scanning equipment iPad and custom scan plan.
 - Un-Box and launch scanning site on iPad.
 - Follow the step-by-step videos that will ensure a smooth experience.
 - iPad can video chat with PMC scan tech.
- On call for video support.

End of
Scan

- Return scanner, iPad and scan plan to case and ships back to PMC with the included shipping label.



It's not for everyone

Good and Bad Projects for YouScan

Not every project is a great fit for YouScan. Some are too large, some are small but too complex. Exactly what is and is not a good fit will depend a lot on your comfort level with performing the fieldwork. If you've done several YouScan projects or have a skilled scanner technician on your staff almost all projects can be YouScan. If it's your first ever scanning project let's keep it small.



Good Fit

Smaller project up to 50k sq. ft.

Simple spaces such as office buildings.

Technically comfortable with new things



Bad Fit

Large (100k sq. ft. +) or complex projects.

Most projects that require targets.

Above ceiling scanning



Deal Breakers

Anything that PMC feels will put you or our equipment at high risk of injury or damage.

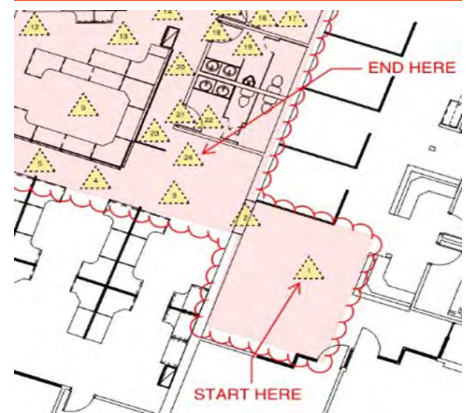
Jobs that are far too complex and are likely to fail.

Now what?

Now that the scanner is on its way back to PMC you sit back and relax. Your data will be ready in a day or more depending on the exact deliverables. In all cases, PMC will post-process, register, and align your point cloud. We will then post it to our web-based, virtual tour & data download platform which will allow you to access all of your projects scan data directly from the site.

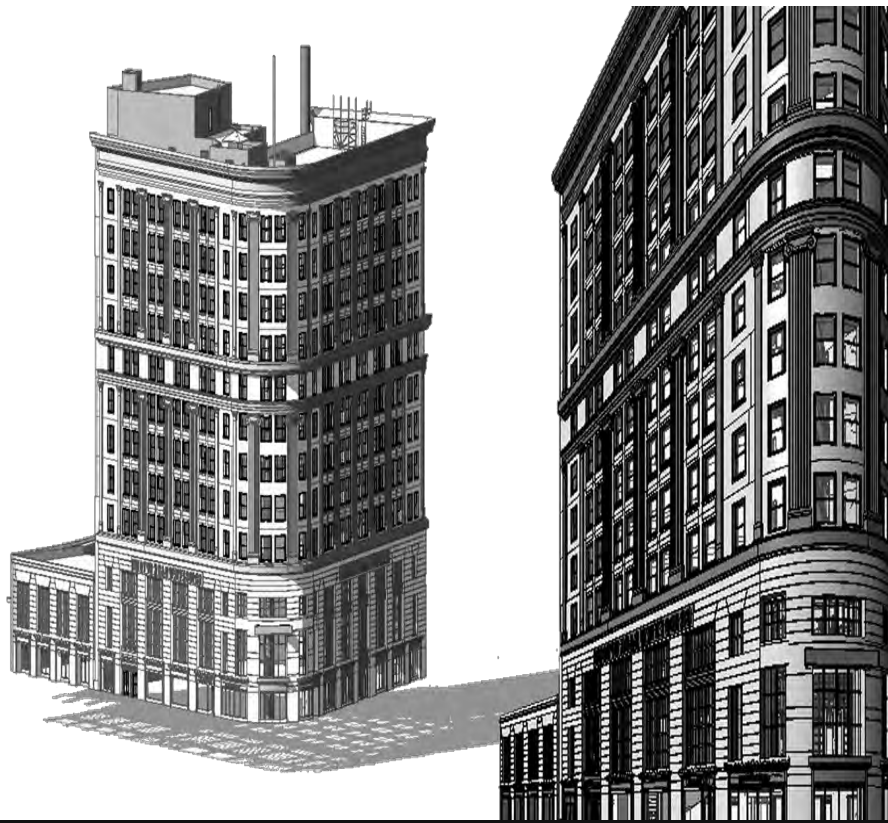
No drawings, no problem.

One of the most common questions we get is, what if I don't have any drawings? Although we certainly prefer to have some type of drawing to develop the scan plan to we can work without it. Well have a lot more questions and there will be



Other Deliverables

- COBie and IFC Support
- Data Integrations
- VDC Support
- Deformation Analysis
- Floor Flatness Analysis/ Contour Mapping
- New Construction Accuracy Analysis/Comparative Analysis
- Point Cloud Modeling
- Training Webinars
- Reconciliation of Clients 2D Design Drawings
- Reconciliation of Clients 3D



PMC—Your reality, digitized. 40 years of digital twins.

Contact Us

Give us a call for more information about our services and products

PMC

15726 Michigan Ave
Dearborn, MI 48126

(313) 441-4460

MoreInfo@pmcorp.com

Visit us on the web at
www.pmcorp.com