

SHOP BOLTS (Unless Noted):
12-3/4 Dia x 2 1/4 A325

ONE COLUMN 100C1

AT GRID: W | 8x9/16
D & L.7 | F | 8x7/16
K | 1 1/2 x 3/16

BILL OF MATERIAL

LINE #	QTY	PC MARK	DESCRIPTION	LENGTH	REMARKS	WEIGHT TOTAL	ADVANCE MILL #
ONE	100C1		COLUMN			1543	
1	100C1		W8x31	43.5	SIZE A992	1346	
1	BP5		PL1x11	0.11	A36	24	
2	p89		PL1/2x8	1.7	(BOLT TO SHIP) A36	43	
3	p882		PL3/8x12 1/8	1.49	A36	63	
3	p1514		PL3/8x5 1/2	0.8	A36	14	
6	p883		PL3/8x3 1/16	0.37	A36	8	
2	p973		PL5/16x6	1.1	(BOLT TO SHIP) A36	14	
2	p962		PL1/4x8	0.9	(SHIM PLATE) A36	10	
4			3/4 Dia A325	0.21	+1HD WASH	3	
12			3/4 Dia A325	0.21	+1HD WASH	8	
FIELD BOLTS							
4			3/4 Dia A325	0.21	+1HD WASH		

Total weight : 1543

DATE	NO.	DESCRIPTION	BY
		PROJECT NAME	
		LOCATION	
		CONTRACTOR	
		STRUCTURAL ENGINEER	
		DESCRIPTION	
		DATE	JOB No.
		DRAWN BY	DRG No.

COPEES	3/4"	UNO
STEEL ASTM	A992	UNO
ELECTRODES	E70XX	UNO
WELDS	3/16"	UNO
OPEN HOLES	13/16"	UNO
BOLTS	A325N	UNO
PAINIT	STANDARD SHOP PRIMER	

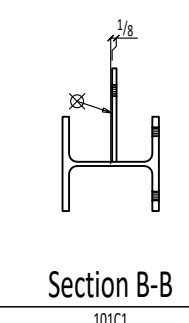
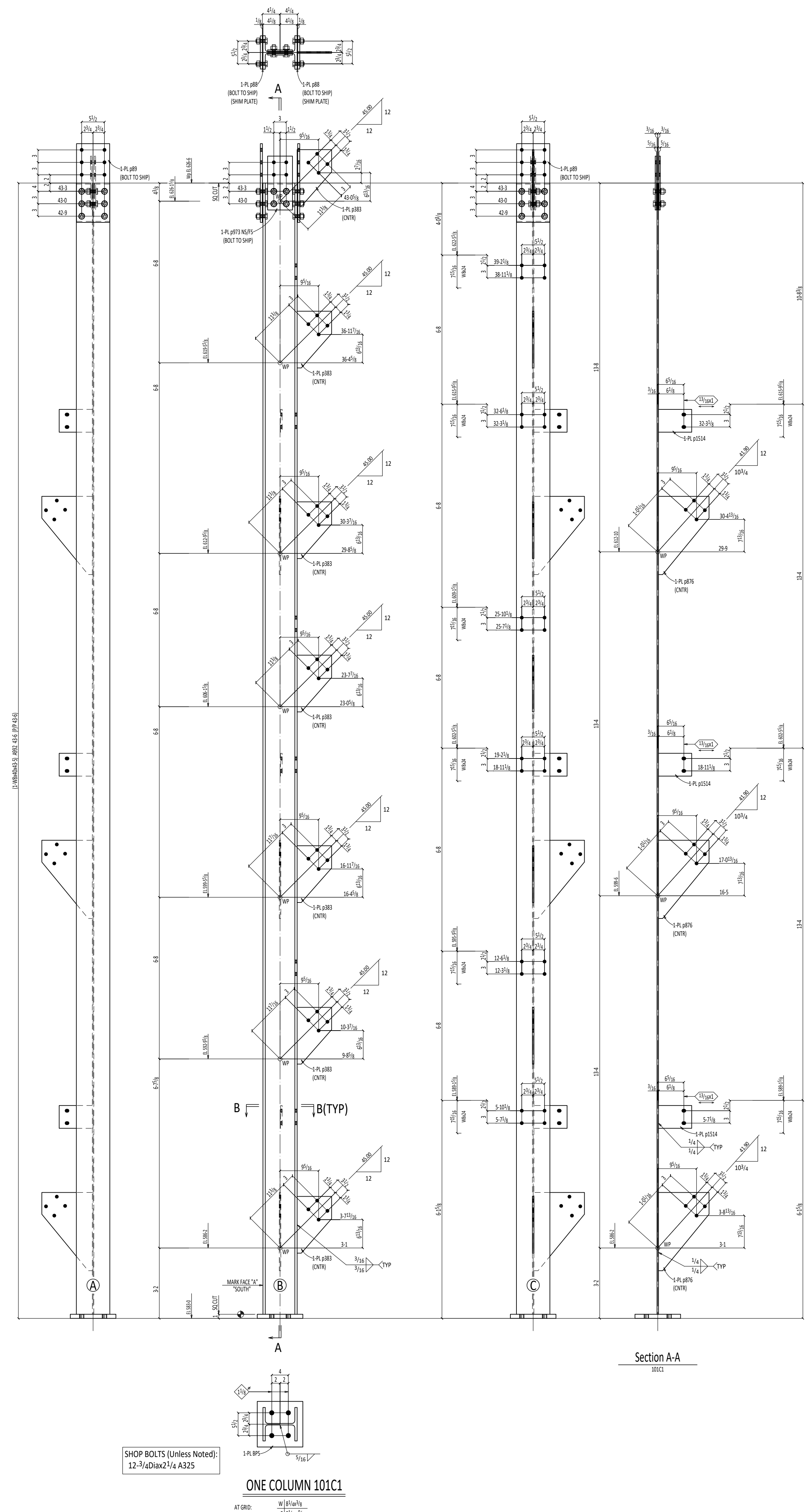
COLUMN DETAIL

100

BILL OF MATERIAL

LINE #	QTY	PC MARK	DESCRIPTION	LENGTH	REMARKS	WEIGHT TOTAL	ADVANCE MILL #
E	ONE	101C1	COLUMN			2019	
1	101C1		W8x40	43	SIZE A992	1737	
1	BP5		PL1x11	0	A36	34	
2	p89		PL1/2x8	1	(BOLT TO SHIP) A36	43	
3	p876		PL3/8x12 3/16	1	67/8 A36	73	
7	p383		PL3/8x8 5/16	1	1 11/16 A36	85	
3	p1514		PL3/8x5 1/2	0	8 A36	14	
2	p973		PL5/16x6	1	(BOLT TO SHIP) A36	14	
2	p88		PL1/8x8	0	9 (SHIM PLATE) A36	5	
2	p972		PL1/8x6	0	6 1/4 A36	3	
4			3/4 Dia A325	0	2 1/2 +1HD WASH	3	
12			3/4 Dia A325	0	2 1/4 +1HD WASH	8	

Total weight : 2019



Section B-B

Section A-A

SHOP BOLTS (Unless Noted):
12-3/4 Dia x 2 1/4 A325

ONE COLUMN 101C1

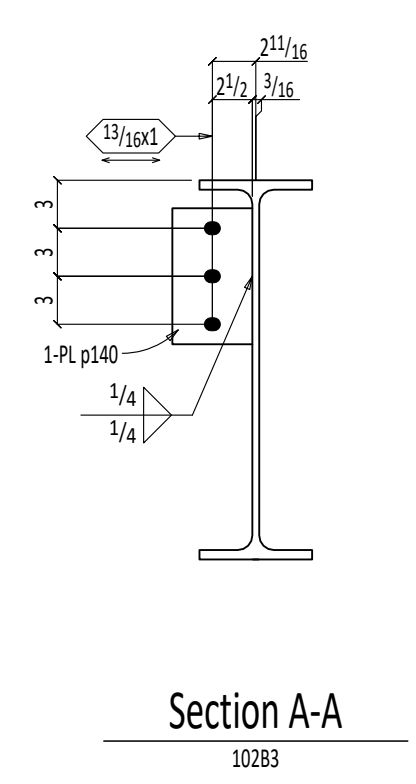
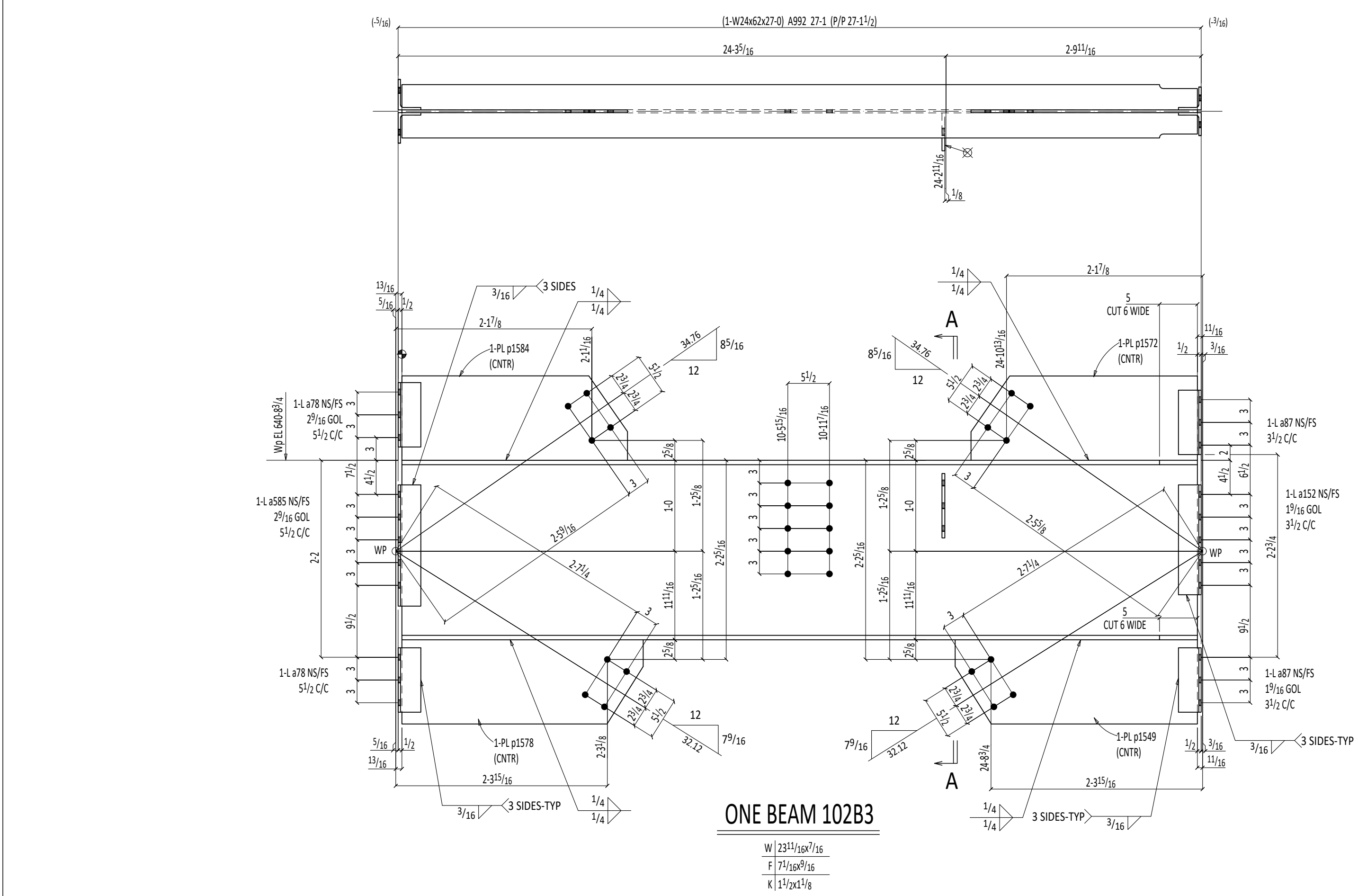
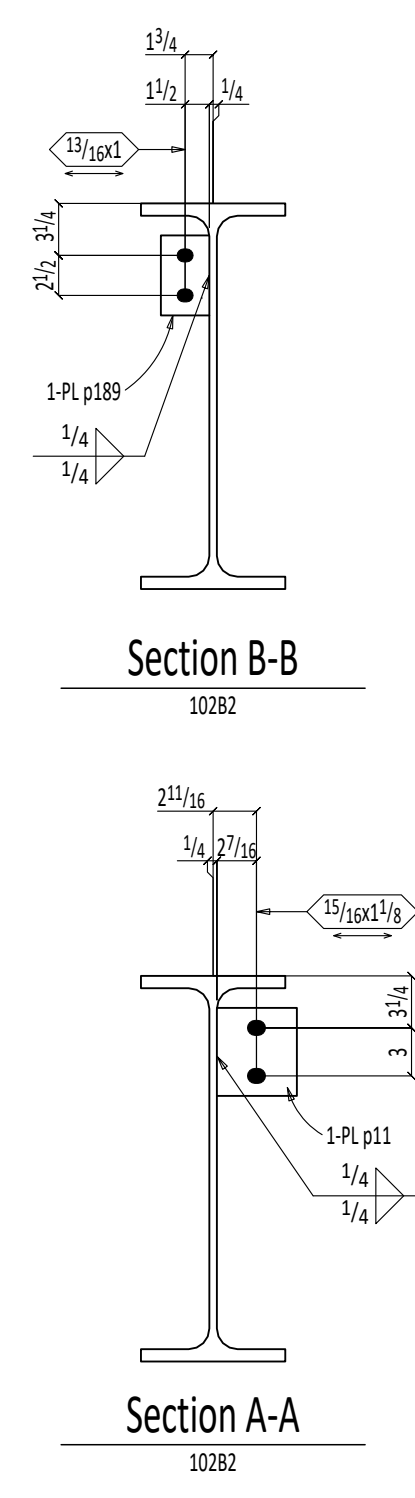
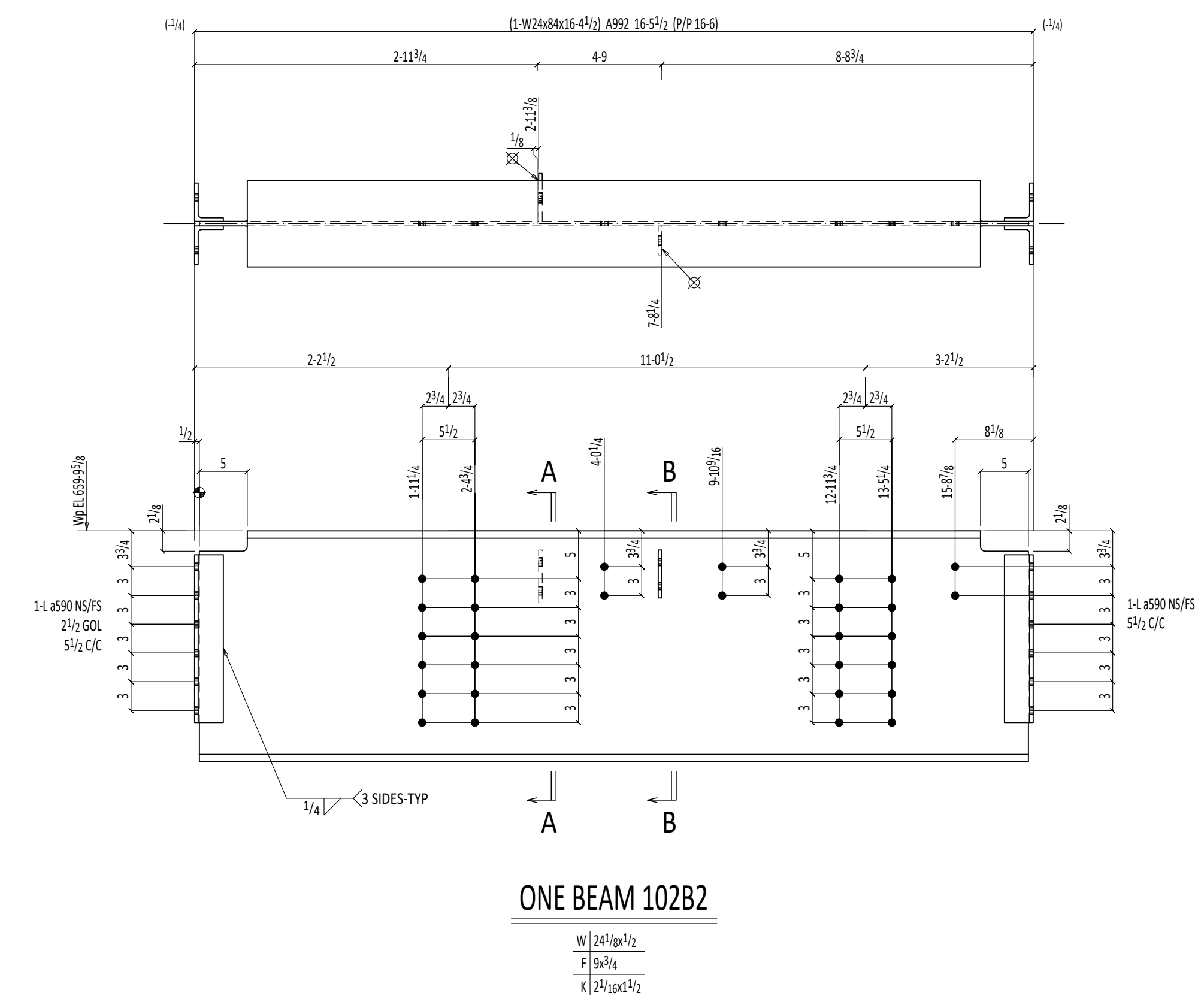
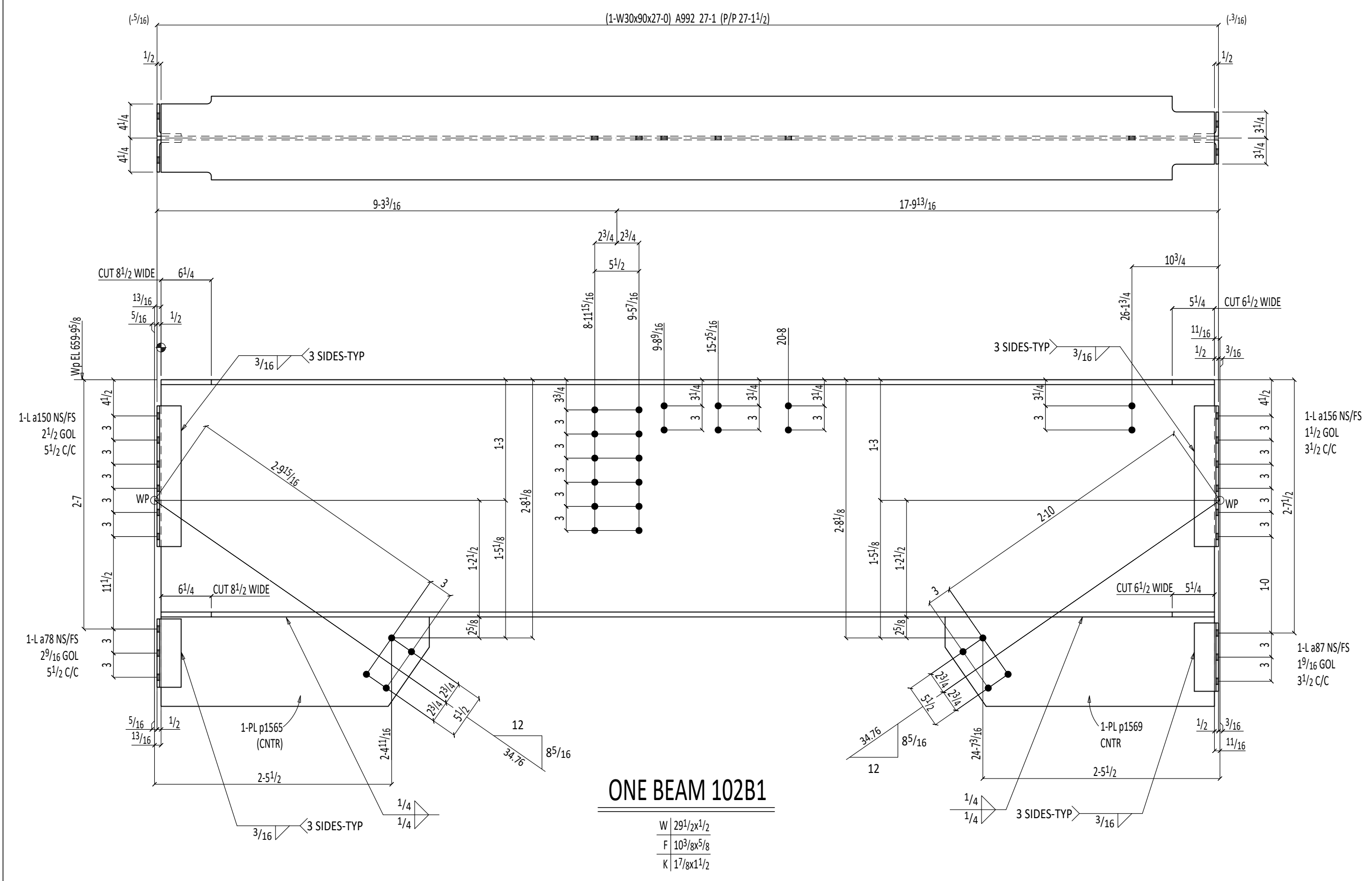
AT 090: W 8x40
9.8.11 T 8/16x8 5/16
K 1 1/2x7/8

DATE	NO.	DESCRIPTION	BY
		PROJECT NAME	
		LOCATION	
		CONTRACTOR	
		STRUCTURAL ENGINEER	
		DESCRIPTION	
		DATE	JOB No.
		DRAWN BY	DRG No.

COPEs	3/4"	UNO
STEEL ASTM	A992	UNO
ELECTRODES	E70XX	UNO
WELDS	3/16"	UNO
OPEN HOLES	13/16"	UNO
BOLTS	A325N	UNO
PAINT	STANDARD SHOP PRIMER	

COLUMN DETAIL

101



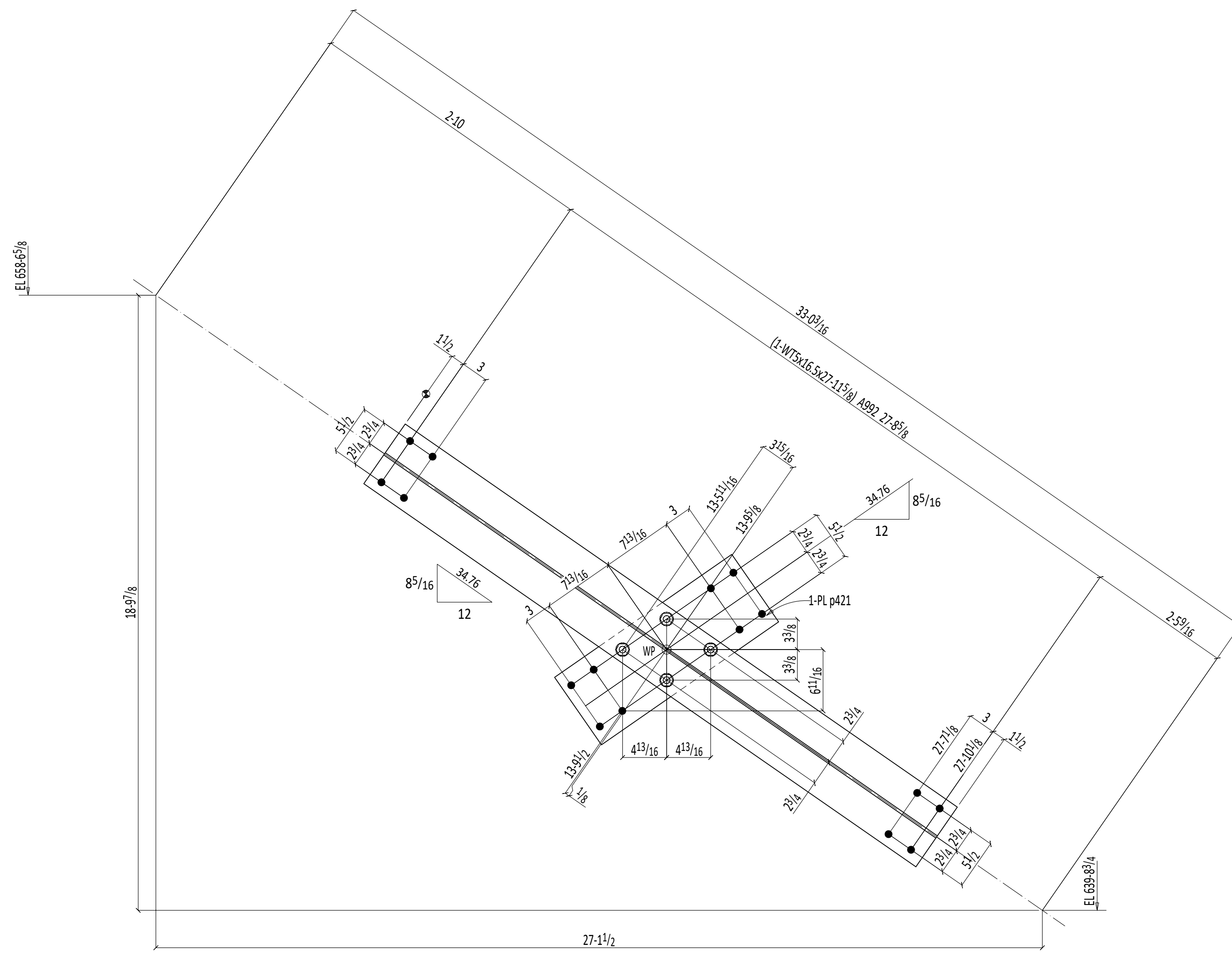
BILL OF MATERIAL						
LINE #	QTY	PC MARK	DESCRIPTION	LENGTH	REMARKS	WEIGHT TOTAL
ONE 102B1			BEAM			2567
1	102B1	W30x90		27 0	A992	2430
2	a150	L4x2x3/16		1 5 1/2	A36	21
2	a78	L3x2x3/16		0 8 1/2	A36	10
2	a156	L3x2x3/16		1 5 1/2	A36	18
2	a87	L3x2x3/16		0 8 1/2	A36	9
1	p1569	PL 3/8x11 1/8		2 9 1/2	A36	40
1	p1565	PL 3/8x11 1/8		2 9 3/8	A36	39
			FIELD BOLTS			
18		3/4 Dia A325		0 2	+1HD WASH	
18		3/4 Dia A325		0 1 3/4	+1HD WASH	
ONE 102B2			BEAM			1430
1	102B2	W24x84		16 4 1/2	A992	1376
4	a590	L4x2x3/8		1 5 1/2	A36	50
1	p11	PL 3/8x5		0 5 1/2	A36	3
1	p189	PL 3/8x3		0 5	A36	2
			FIELD BOLTS			
24		3/4 Dia A325		0 2	+1HD WASH	
ONE 102B3			BEAM			1896
1	102B3	W24x62		27 0	A992	1674
2	a585	L4x2x3/16		1 4	A36	19
4	a78	L4x2x3/16		0 8 1/2	A36	20
2	a152	L3x2x3/16		1 2 1/2	A36	15
4	a87	L3x2x3/16		0 8 1/2	A36	17
1	p1584	PL 3/8x11 1/8		2 5 1/4	A36	35
1	p1572	PL 3/8x11 1/8		2 5 7/8	A36	35
1	p1578	PL 3/8x11 1/8		2 7 7/8	A36	38
1	p1549	PL 3/8x11 1/8		2 8	A36	38
1	p140	PL 3/8x5		0 8 1/2	A36	5
			FIELD BOLTS			
22		3/4 Dia A325		0 2	+1HD WASH	
22		3/4 Dia A325		0 1 3/4	+1HD WASH	

Total weight : 5892

DATE	NO.	DESCRIPTION	BY
		PROJECT NAME	
		LOCATION	
		CONTRACTOR	
		STRUCTURAL ENGINEER	
		DESCRIPTION	
		DATE	JOB No.
		DRAWN BY	DRG No.

COPE	3/4"	UNO
STEEL ASTM	A992	UNO
ELECTRODES	E70XX	UNO
WELDS	3/16"	UNO
OPEN HOLES	13/16"	UNO
BOLTS	A325N	UNO
PAINT	STANDARD SHOP PRIMER	

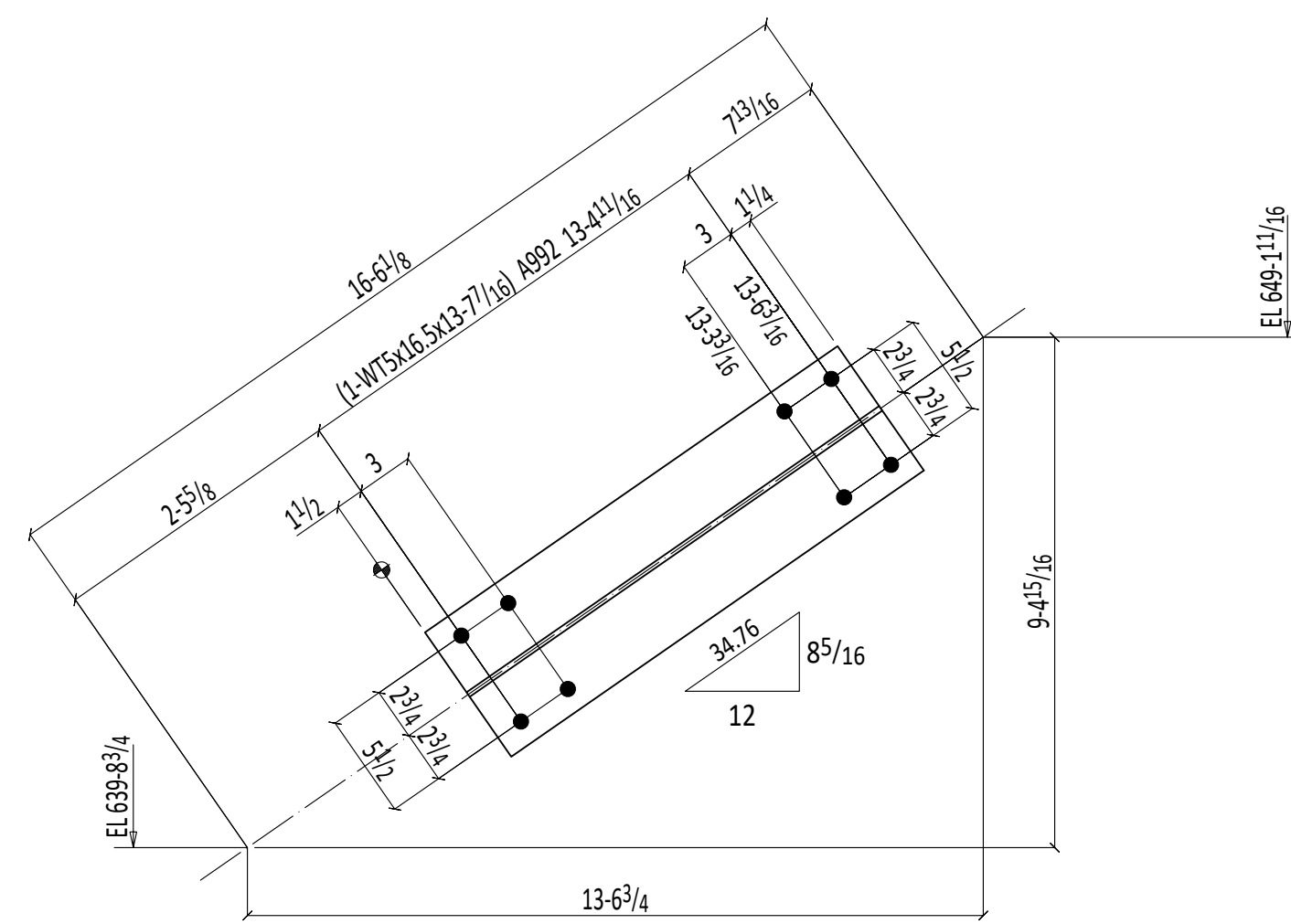
BEAM DETAIL



ONE VERTICAL BRACE 103VB1

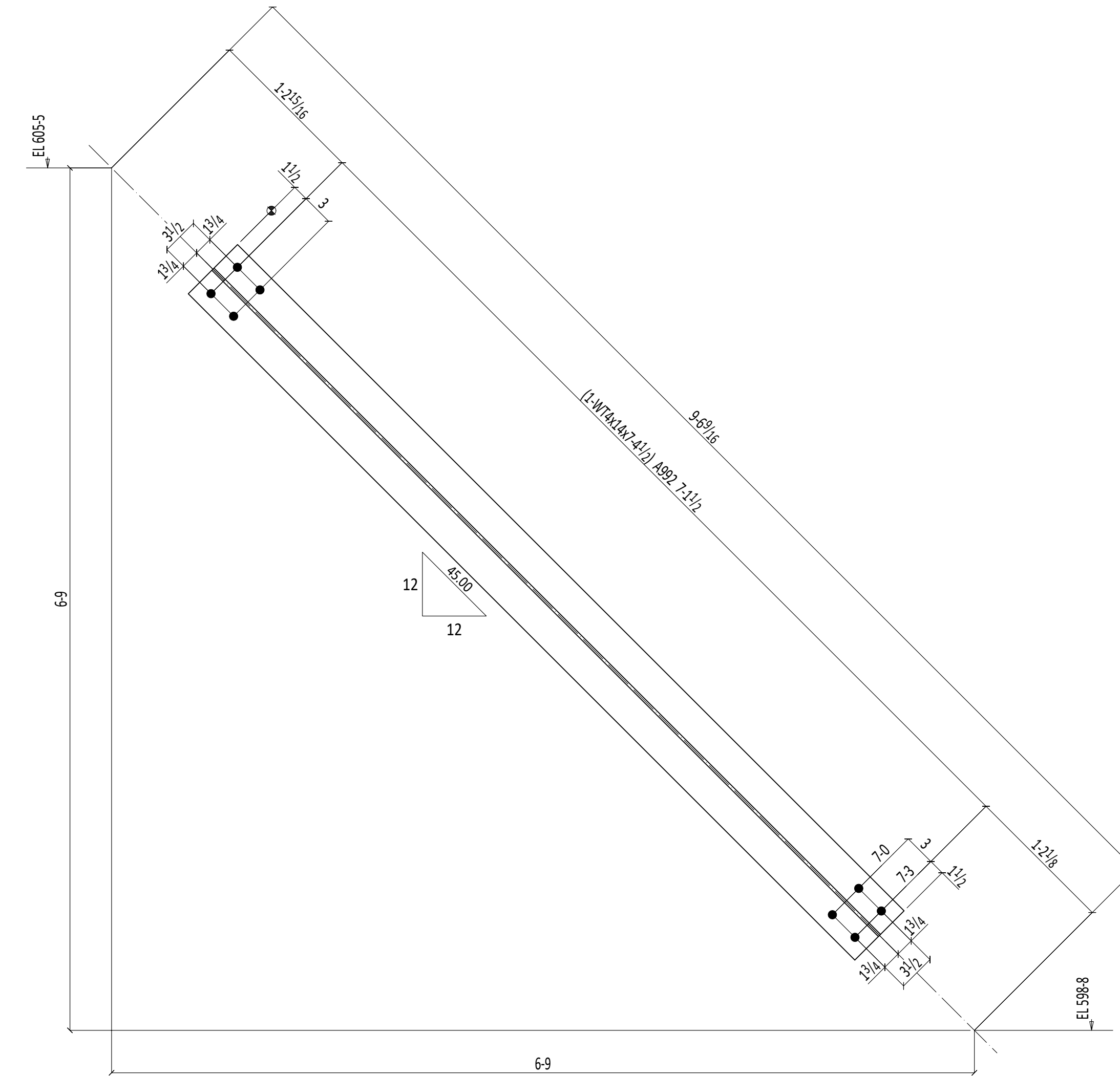
W 47/8x9/16
 F 715/16x7/16
 K 11/8x13/16

SHOP BOLTS:
 4-3/4diax2 A325



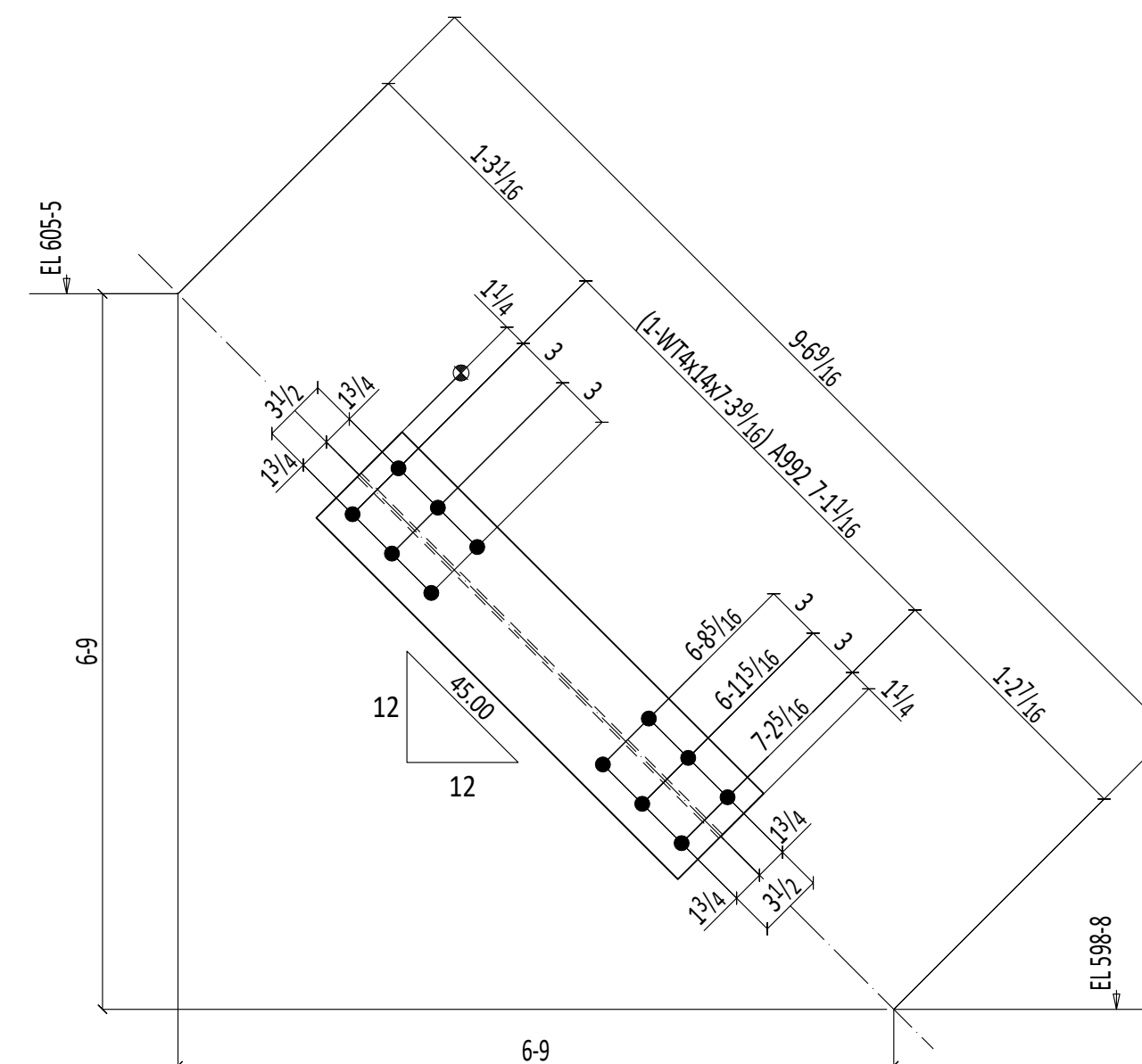
ONE VERTICAL BRACE 103VB3

W 47/8x9/16
 F 715/16x7/16
 K 11/8x13/16



ONE VERTICAL BRACE 103VB2

W 4x9/16
 F 69/16x7/16
 K 15/16x9/8



ONE VERTICAL BRACE 103VB4

W 4x9/16
 F 69/16x7/16
 K 15/16x9/8

BILL OF MATERIAL

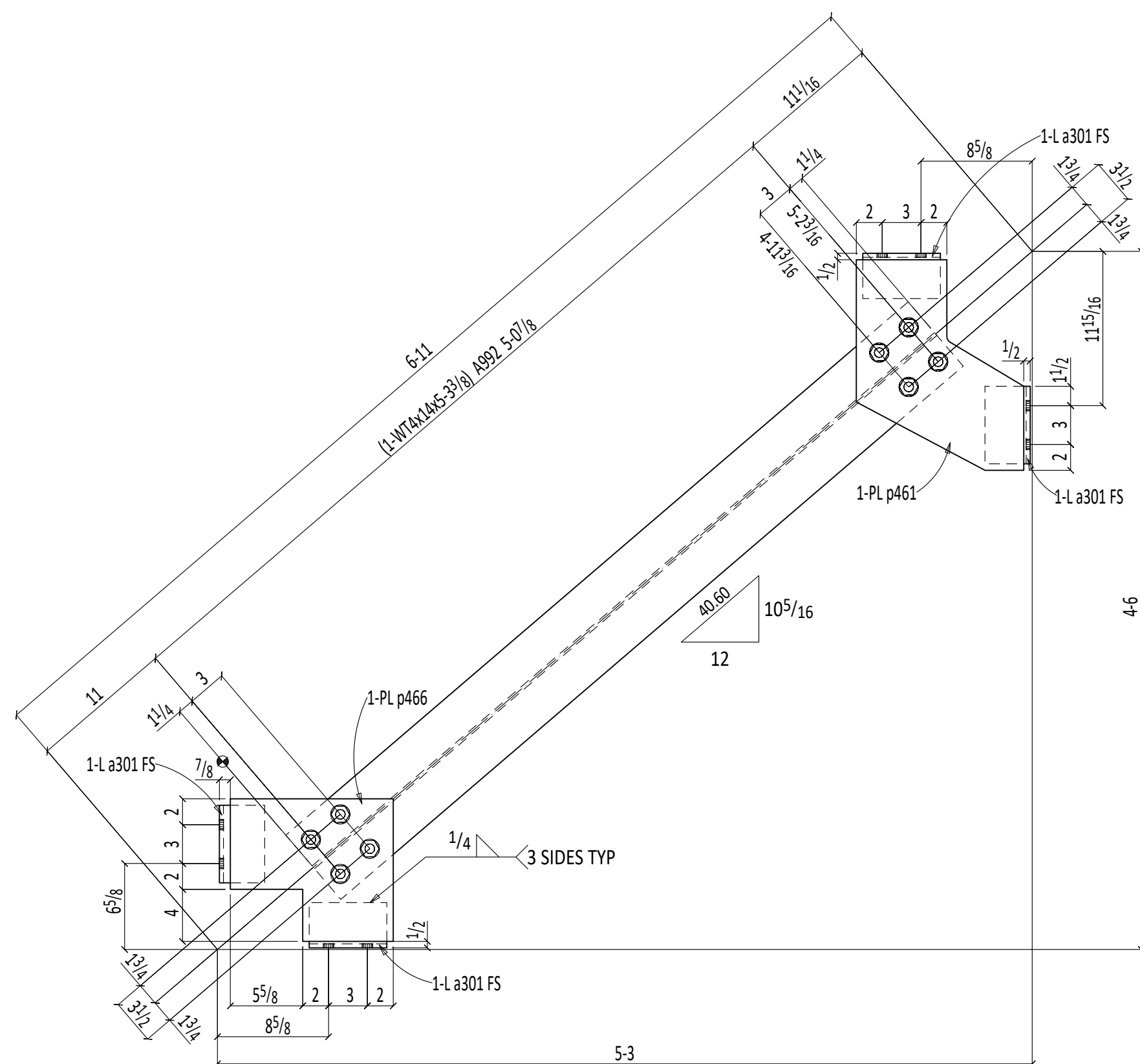
LINE #	QTY	PC MARK	DESCRIPTION	LENGTH	REMARKS	WEIGHT TOTAL	ADVANCE MILL #
ONE1 103VB1			VERTICAL BRACE			487	
1	103VB1		WTSx16.5	27 11 5/8	A992	461	
1	p421		PL 3/8x9	1 11 3/8	A36	23	
4			3/4 Dia A325	0 2	+1HD WASH	3	
			FIELD BOLTS				
8			3/4 Dia A325	0 2	+1HD WASH		
ONE1 103VB2			VERTICAL BRACE			103	
1	103VB2		WT4x14	7 4 1/2	A992	103	
			FIELD BOLTS				
8			3/4 Dia A325	0 2	+1HD WASH		
ONE1 103VB3			VERTICAL BRACE			225	
1	103VB3		WTSx16.5	13 7 7/16	A992	225	
			FIELD BOLTS				
8			3/4 Dia A325	0 2	+1HD WASH		
ONE1 103VB4			VERTICAL BRACE			102	
1	103VB4		WT4x14	7 3 9/16	A992	102	
			FIELD BOLTS				
12			3/4 Dia A325	0 2	+1HD WASH		

Total weight : 917

DATE	NO.	DESCRIPTION	BY
		PROJECT NAME	
		LOCATION	
		CONTRACTOR	
		STRUCTURAL ENGINEER	
		DESCRIPTION	
		DATE	JOB No.
		DRAWN BY	DRG No. 103

VB DETAIL

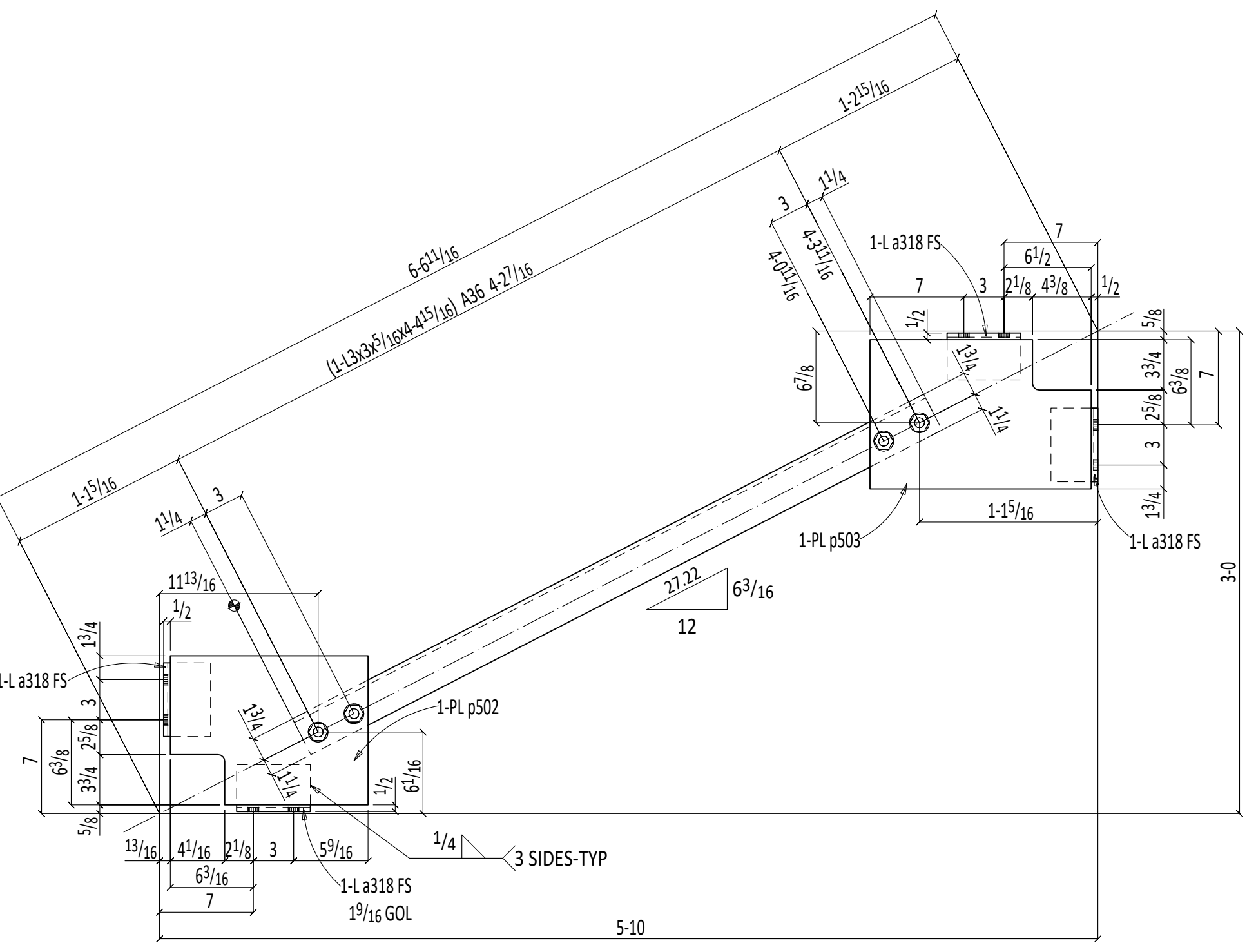
COPEs	3/4"	UNO
STEEL ASTM	A992	UNO
ELECTRODES	E70XX	UNO
WELDS	3/16"	UNO
OPEN HOLES	13/16"	UNO
BOLTS	A325N	UNO
PAINT	STANDARD SHOP PRIMER	



ONE HORIZONTAL BRACE 104HB1

SHOP NOTE:
STEM FAR SIDE
W 4x9/16
F 6x15x7/16
K 15/16x6/8

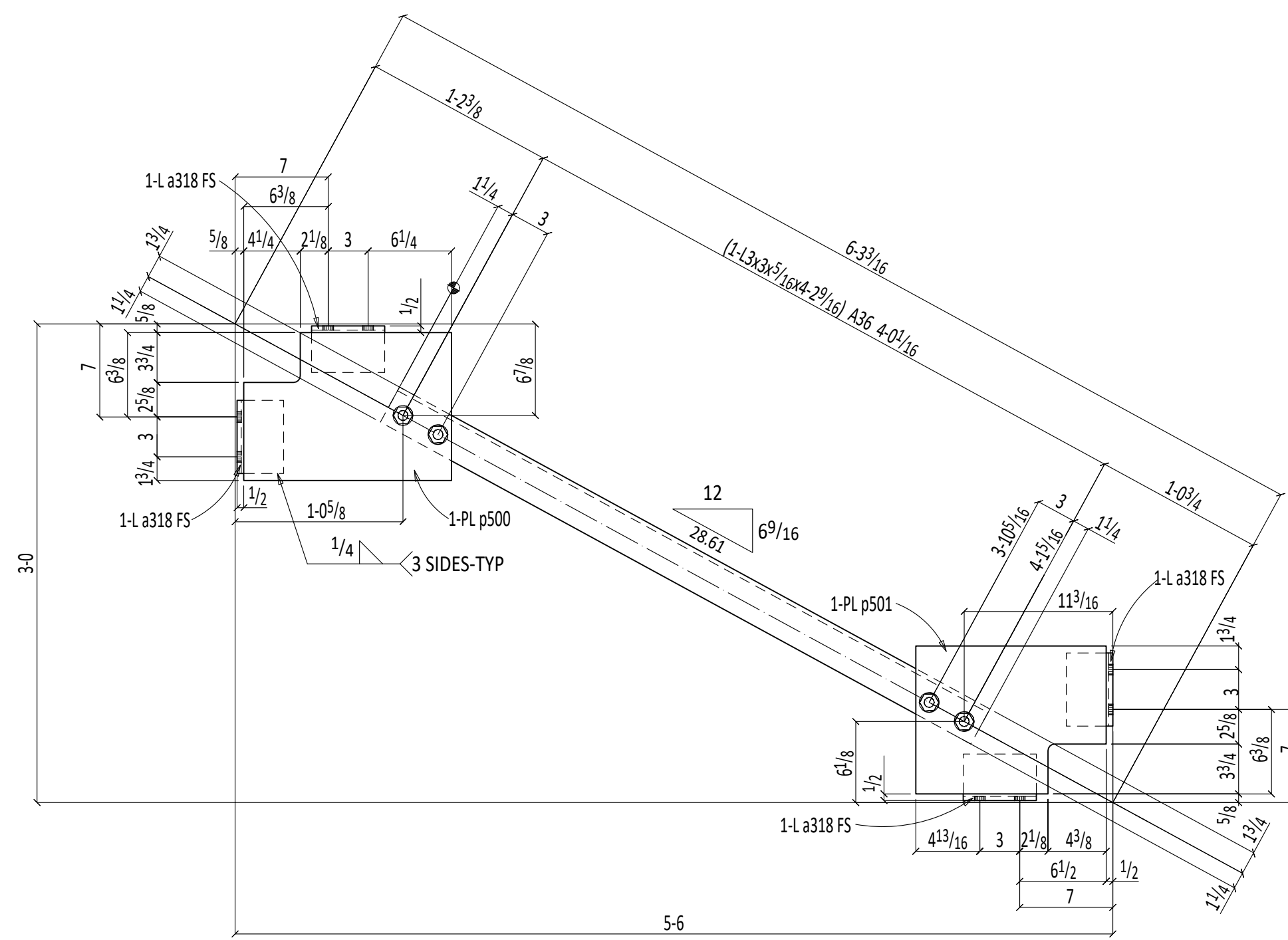
SHOP BOLTS:
8-3/4 Dia x 2 A325



ONE HORIZONTAL BRACE 104HB3

SHOP NOTE:
TOE DIRECTION FAR SIDE

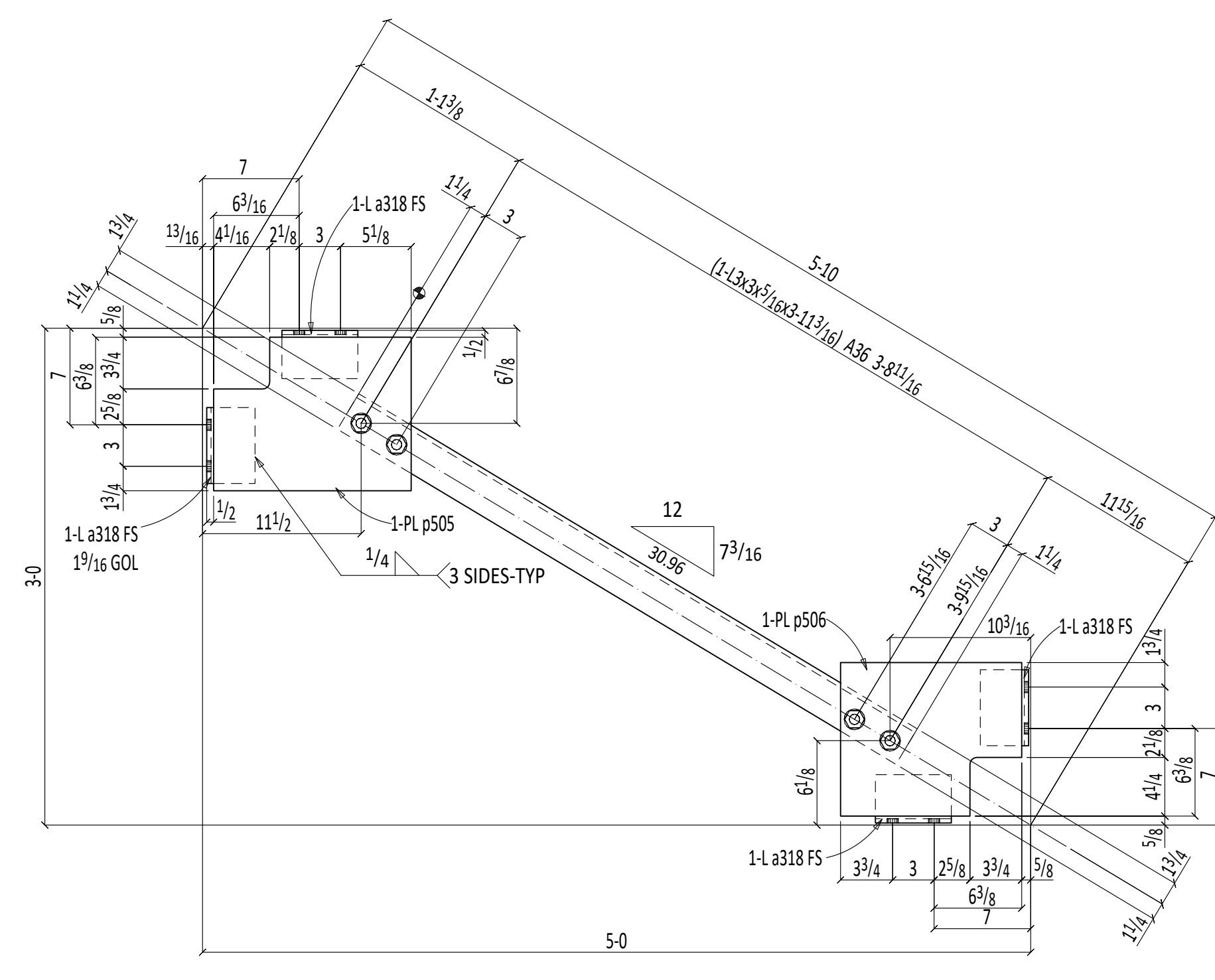
SHOP BOLTS:
4-3/4 Dia x 1 3/4 A325



ONE HORIZONTAL BRACE 104HB2

SHOP NOTE:
TOE DIRECTION FAR SIDE

SHOP BOLTS:
4-3/4 Dia x 1 3/4 A325



ONE HORIZONTAL BRACE 104HB4

SHOP NOTE:
TOE DIRECTION FAR SIDE

SHOP BOLTS:
4-3/4 Dia x 1 3/4 A325

BILL OF MATERIAL

LINE #	QTY	PC MARK	DESCRIPTION	LENGTH	REMARKS	WEIGHT TOTAL	ADVANCE MILL #
ONE 104HB1			HORIZONTAL BRACE				131
1	104HB1	WT4x4		5 33/8	A992		74
4	a301	L3 1/2 x 3 1/2 x 5/16		0 6	A36		14
1	p461	PL 3/8 x 12 1/2		1 49/16	(BOLT TO SHIP) A36		22
1	p466	PL 3/8 x 11		1 09/16	(BOLT TO SHIP) A36		15
8				0 2	+1HD WASH		5
			FIELD BOLTS				
8			3/4 Dia A325	0 13/4	+1HD WASH		
ONE 104HB2			HORIZONTAL BRACE				76
1	104HB2	L3x2x9/16		4 29/16	A36		26
4	a318	L3 1/2 x 3 x 5/16		0 5 1/2	A36		12
1	p500	PL 3/8 x 11 1/8		1 39/8	A36		18
1	p501	PL 3/8 x 11 1/8		1 29/16	A36		17
4				0 13/4	+1HD WASH		2
			FIELD BOLTS				
6			3/4 Dia A325	0 13/4	+1HD WASH		
ONE 104HB3			HORIZONTAL BRACE				78
1	104HB3	L3x2x9/16		4 415/16	A36		27
4	a318	L3 1/2 x 3 x 5/16		0 5 1/2	A36		12
1	p503	PL 3/8 x 11 1/8		1 41/2	A36		20
1	p502	PL 3/8 x 11 1/8		1 29/4	A36		17
4				0 13/4	+1HD WASH		2
			FIELD BOLTS				
2			3/4 Dia A325	0 2	+1HD WASH		
4			3/4 Dia A325	0 13/4	+1HD WASH		
ONE 104HB4			HORIZONTAL BRACE				71
1	104HB4	L3x2x9/16		3 113/16	A36		24
4	a318	L3 1/2 x 3 x 5/16		0 5 1/2	A36		12
1	p505	PL 3/8 x 11 1/8		1 29/16	A36		17
1	p506	PL 3/8 x 11 1/8		1 11/8	A36		16
4				0 13/4	+1HD WASH		2
			FIELD BOLTS				
2			3/4 Dia A325	0 2	+1HD WASH		
4			3/4 Dia A325	0 13/4	+1HD WASH		

Total weight : 356

DATE	NO.	DESCRIPTION	BY
		PROJECT NAME	
		LOCATION	
		CONTRACTOR	
		STRUCTURAL ENGINEER	
		DESCRIPTION	
		DATE	JOB No.
		DRAWN BY	DRG No.

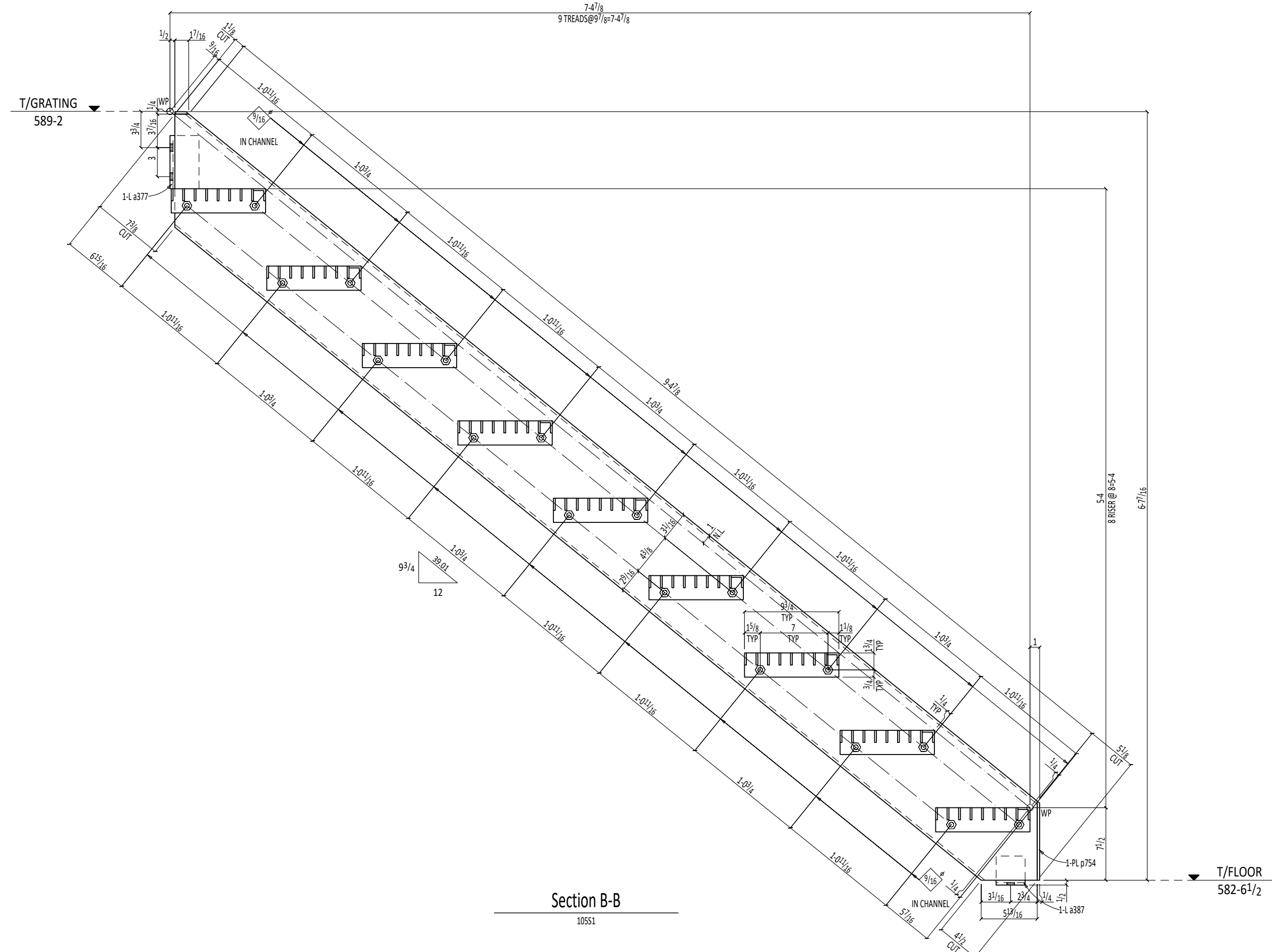
COPEES	3/4"	UNO
STEEL ASTM	A992	UNO
ELECTRODES	E70XX	UNO
WELDS	3/16"	UNO
OPEN HOLES	13/16"	UNO
BOLTS	A325N	UNO
PAINIT	STANDARD SHOP PRIMER	

HB DETAIL

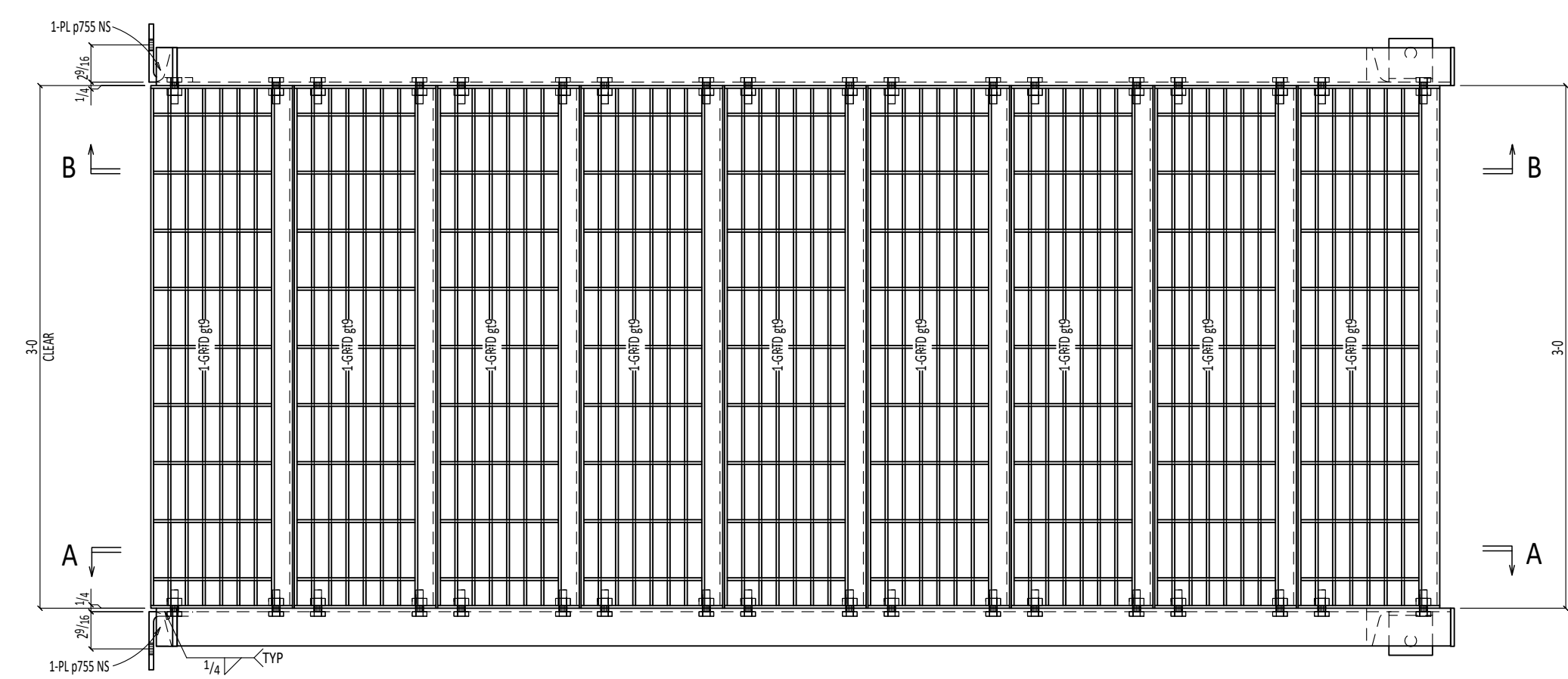
BILL OF MATERIAL

LINE #	QTY	PC	MARK	DESCRIPTION	LENGTH	REMARKS	WEIGHT TOTAL	ADVANCE MILL #
ONE	10551			STAIR			591	
1	10551			C10x15.3	10 2 13/16	A36	157	
1	c1593			C10x15.3	10 2 13/16	A36	157	
2	a377			L4x2x1/16	0 5 1/2	A36	7	
2	a387			L3x3x1/4	0 3	A36	2	
2	p754			PL 1/2x2 1/8	0 8 3/16	A36	3	
2	p755			PL 1/2x1 7/16	0 2 5/8	A36	1	
9	g19			GT 1 1/2x3/4	3 0	A-1011	259	
36				1/2 Dia A307	0 1 1/2		6	
FIELD BOLTS								
4				3/4 Dia A325	0 1 3/4	+1HD WASH		

Total weight : 591

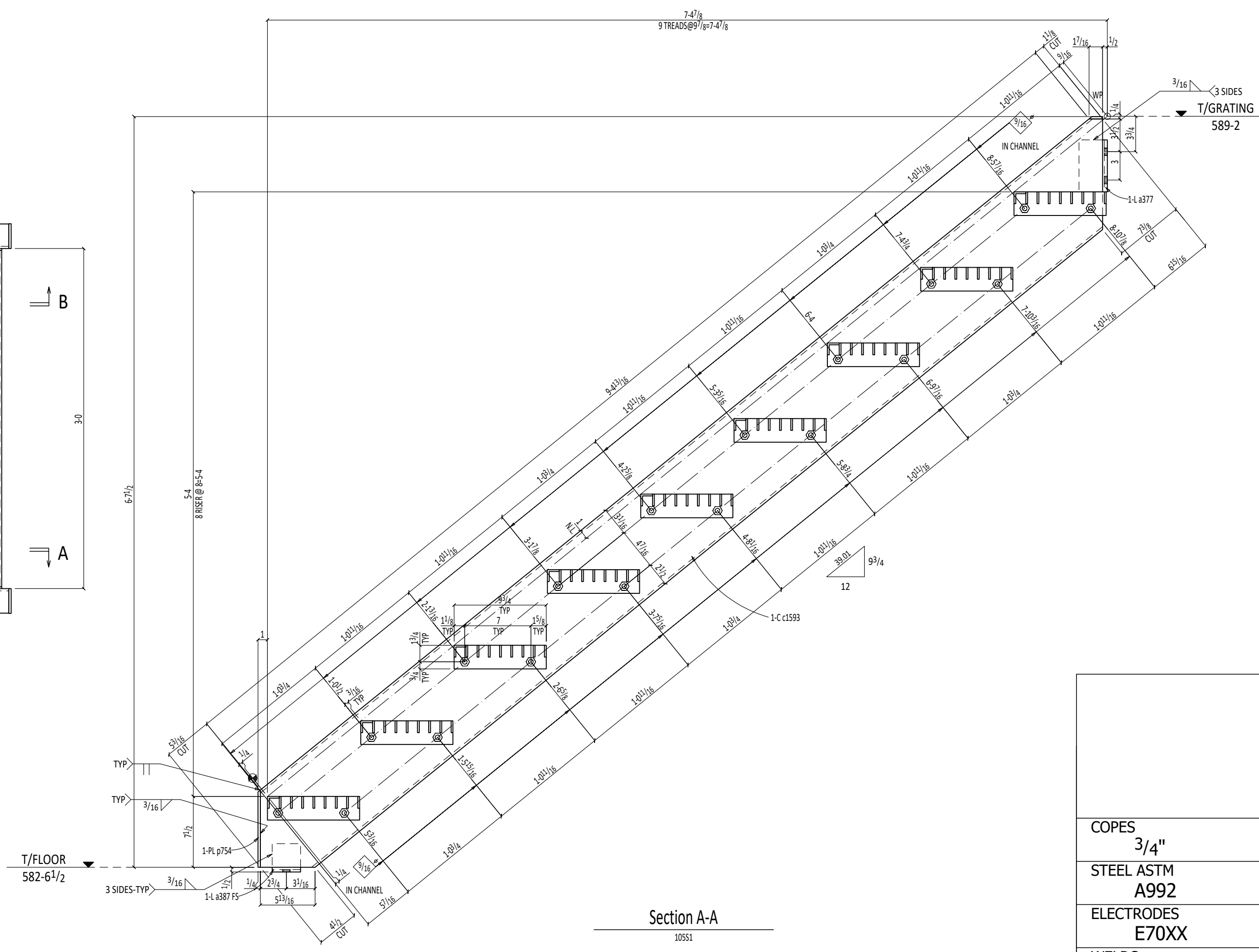


Section B-B
10551



ONE STAIR 10551

SHOP BOLTS:
36-1/2 Dia x 1 1/2 A307

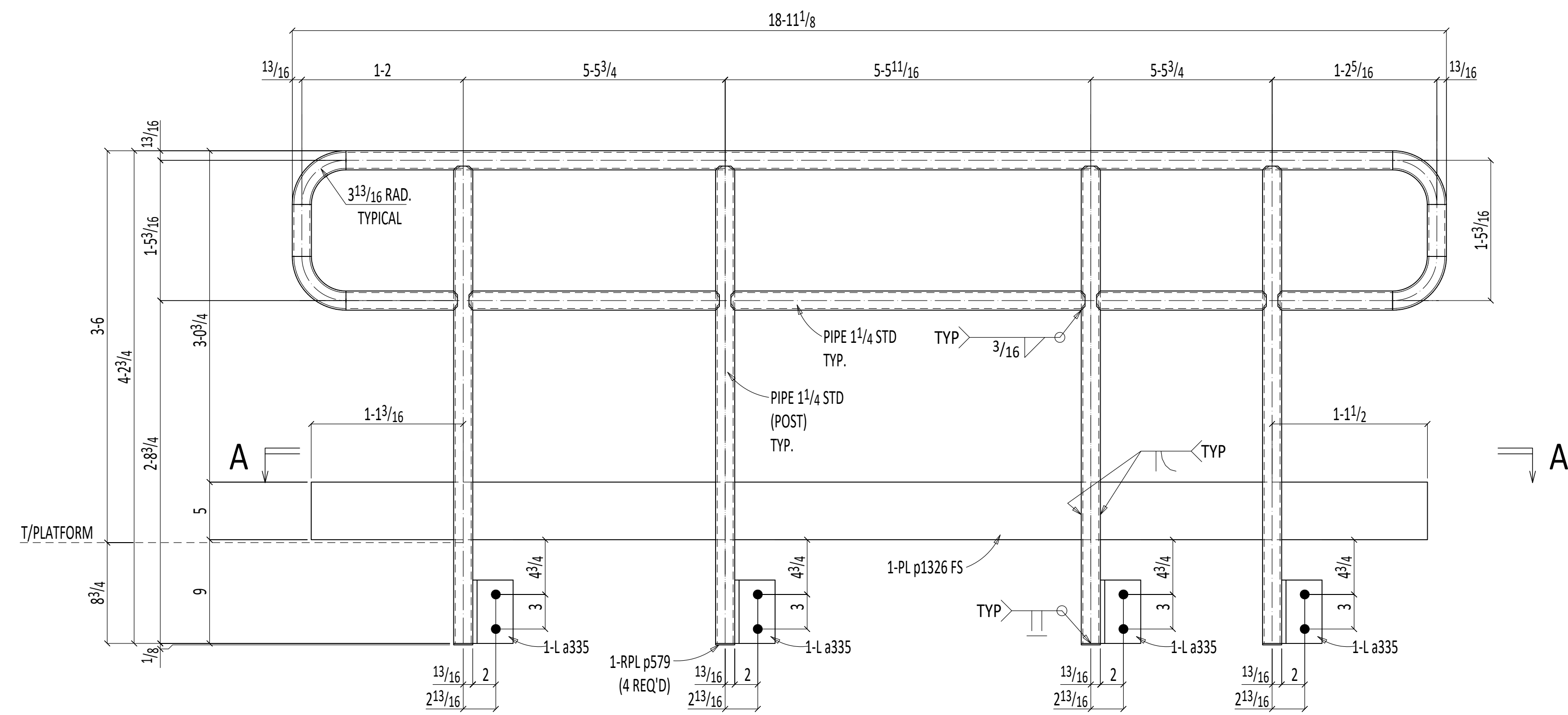


Section A-A
10551

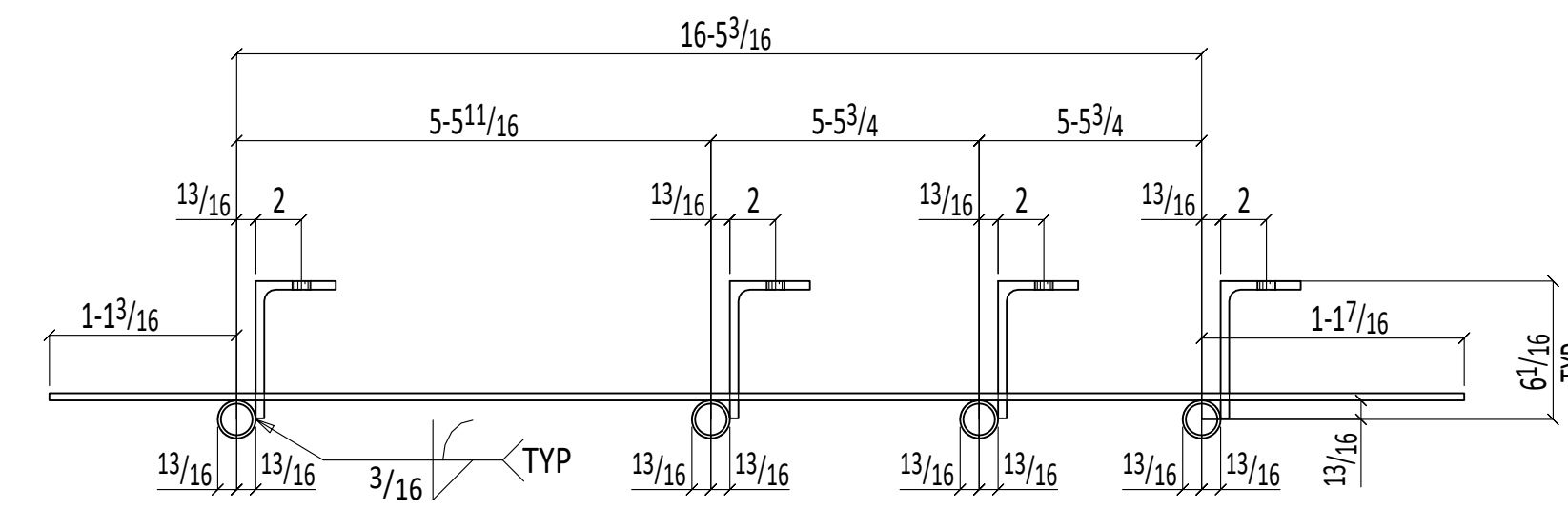
DATE	NO.	DESCRIPTION	BY
		PROJECT NAME	
		LOCATION	
		CONTRACTOR	
		STRUCTURAL ENGINEER	
		DESCRIPTION	
		DATE	JOB No.
		DRAWN BY	DRG No.

- COPEES 3/4" UNO
- STEEL ASTM A992 UNO
- ELECTRODES E70XX UNO
- WELDS 3/16" UNO
- OPEN HOLES 13/16" UNO
- BOLTS A325N UNO
- PAINT STANDARD SHOP PRIMER

STAIR DETAIL

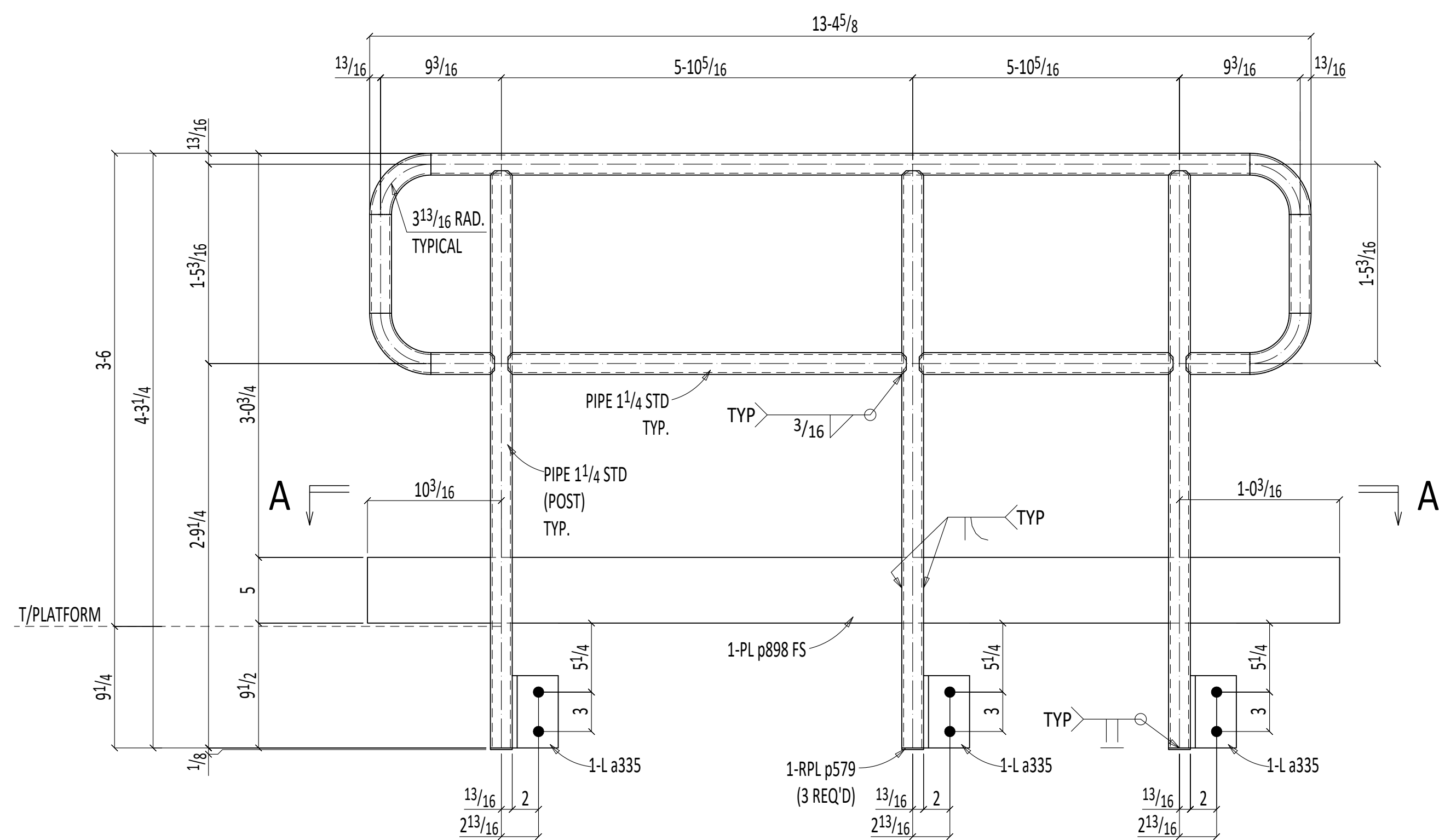


ONE HANDRAIL 106HR1

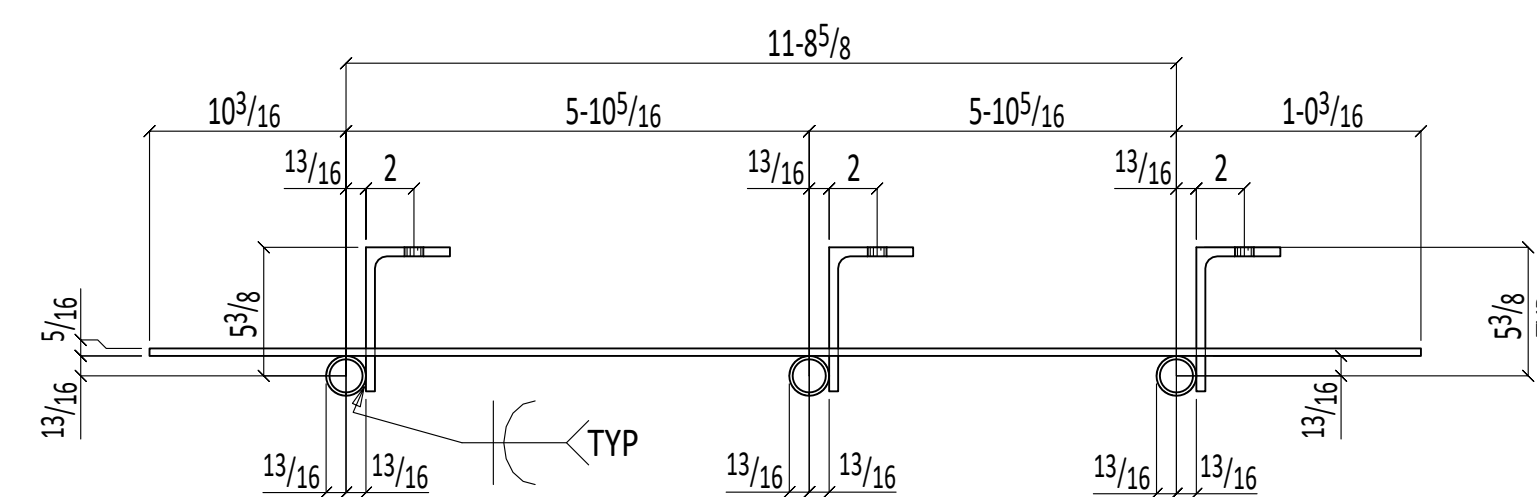


Section A-A

106HR1



ONE HANDRAIL 106HR2



Section A-A

106HR2

BILL OF MATERIAL

LINE #	QTY	PC MARK	DESCRIPTION	LENGTH	REMARKS	WEIGHT TOTAL	ADVANCE MILL #
ONE	106HR1		HANDRAIL			253	
1	106HR1		PIPE 1/4 STD	58 0	LNFT A53	132	
4	a335		16x3 1/2 x 3/8	0 5 1/2	A36	21	
1	p1326		PL 5/16x5	18 7 7/8	A36	99	
4	p579		RPL 1/8x1 1/16		A36	0	
			FIELD BOLTS				
8			3/4 Dia A307	0 2	+1HD WASH		
ONE	106HR2		HANDRAIL			184	
1	106HR2		PIPE 1/4 STD	42 0	LNFT A53	95	
3	a335		16x3 1/2 x 3/8	0 5 1/2	A36	16	
1	p898		PL 5/16x5	13 7	A36	72	
3	p579		RPL 1/8x1 1/16		A36	0	
			FIELD BOLTS				
6			3/4 Dia A307	0 2	+1HD WASH		

Total weight : 436

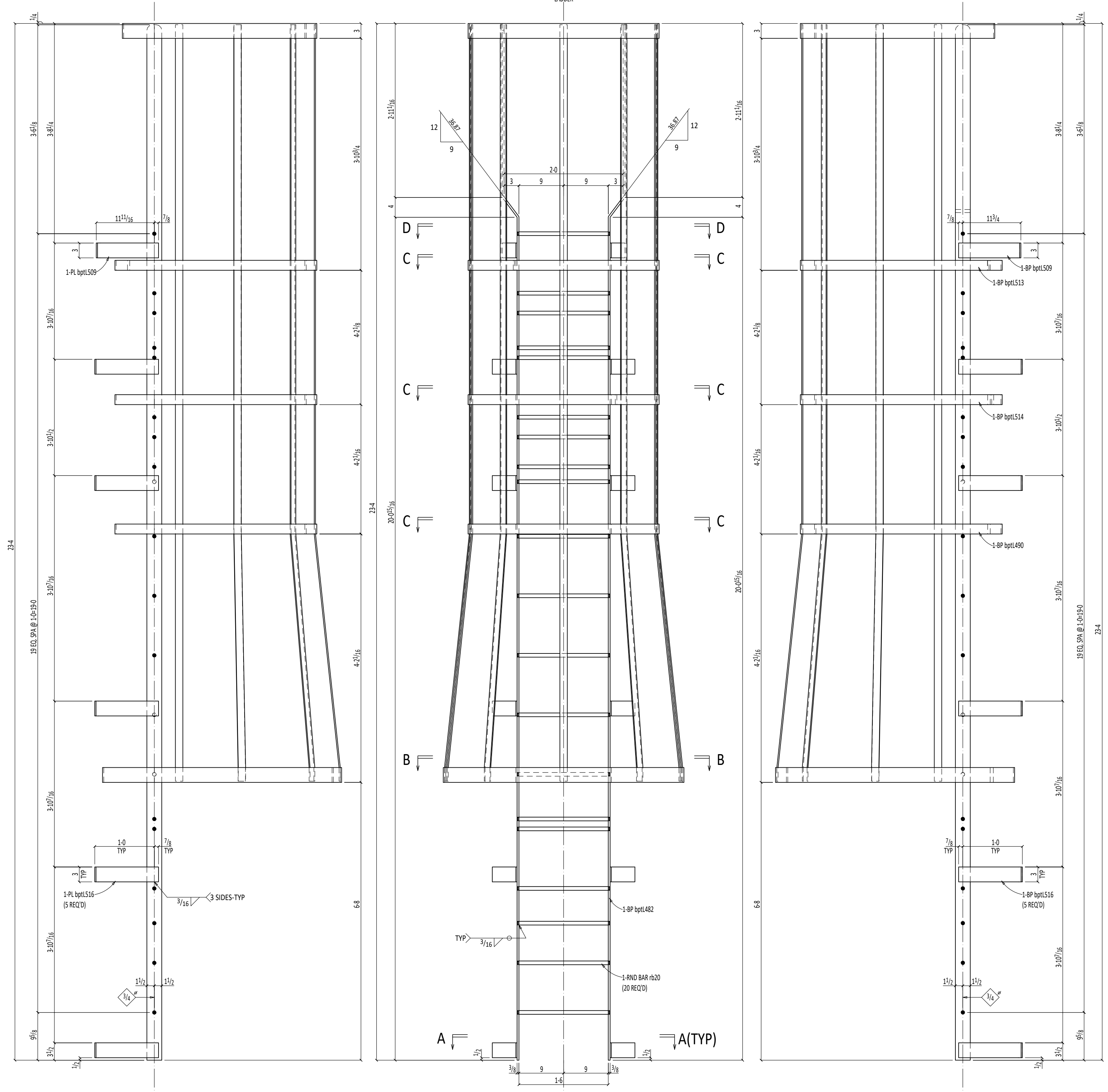
DATE	NO.	DESCRIPTION	BY
		PROJECT NAME	
		UNO	
		LOCATION	
		CONTRACTOR	
		STRUCTURAL ENGINEER	
		DESCRIPTION	
		DATE	JOB No.
		DRAWN BY	DRG No.
			106

HANDRAIL DETAIL

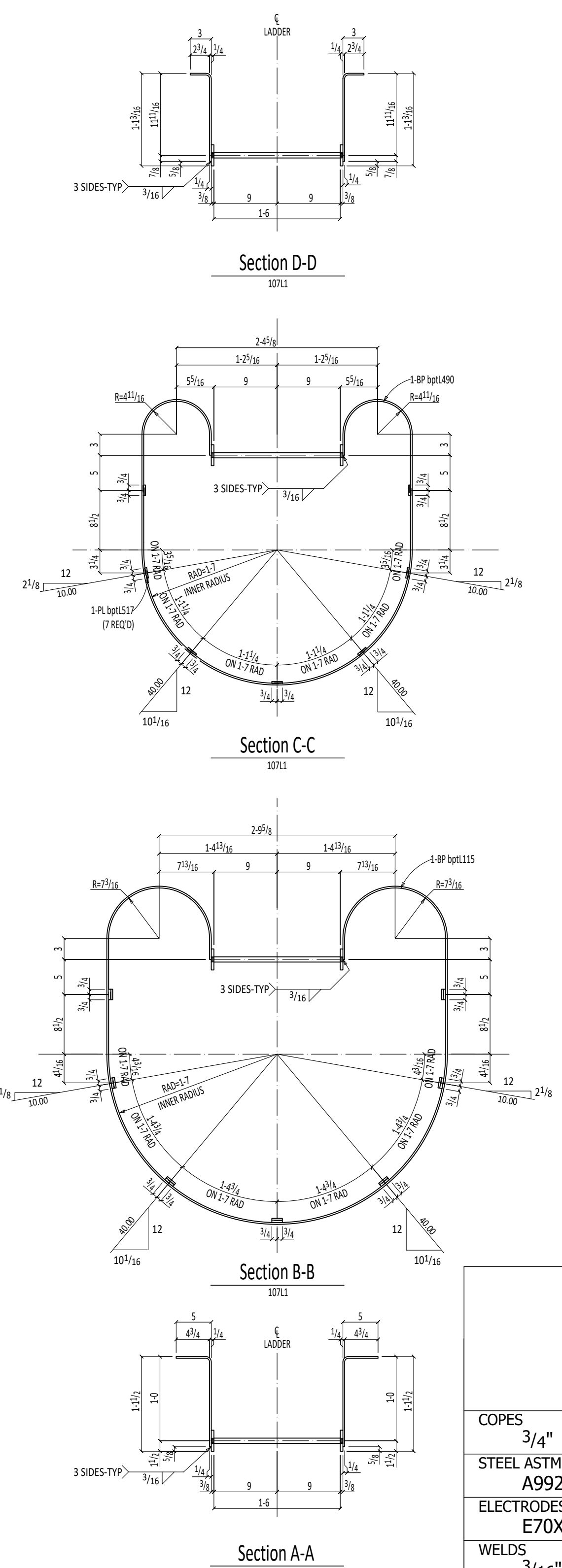
BILL OF MATERIAL

LINE #	QTY	PC MARK	DESCRIPTION	LENGTH	REMARKS	WEIGHT TOTAL	ADVANCE MILL #
ONE	107L1		CAGE LADDER			622	
1	107L1	BP3/8x3		23 43/4	BENT A36	90	
1	bp4482	BP3/8x3		23 43/4	BENT A36	90	
20	rb20	BP3/4		1 61/2	A36	46	
1	bp4482	BP3/8x3		23 43/4	BENT A36	90	
10	bp4482	BP1/4x17 1/16		0 3	BENT A36	37	
2	bp4509	BP1/4x15		0 3	BENT A36	6	
1	bp4482	BP1/4x3		13 43/4	BENT A36	34	
1	bp4482	BP1/4x3		9 11 7/8	BENT A36	25	
1	bp4490	BP1/4x2		10 9 1/16	BENT A36	18	
1	bp4482	BP1/4x2		10 9 1/16	BENT A36	18	
1	bp4482	BP1/4x2		10 9 1/16	BENT A36	18	
7	bp4482	BP1/4x1 1/2		16 7 3/4	BENT A36	149	

Total weight : 622



ONE CAGE LADDER 107L1



COPEES	3/4"	UNO
STEEL ASTM	A992	UNO
ELECTRODES	E70XX	UNO
WELDS	3/16"	UNO
OPEN HOLES	13/16"	UNO
BOLTS	A325N	UNO
PAINT	STANDARD SHOP PRIMER	

DATE	NO.	DESCRIPTION	BY
		PROJECT NAME	
		LOCATION	
		CONTRACTOR	
		STRUCTURAL ENGINEER	
		DESCRIPTION	
		DATE	JOB No.
		DRAWN BY	DRG No.

CAGE LADDER DETAIL